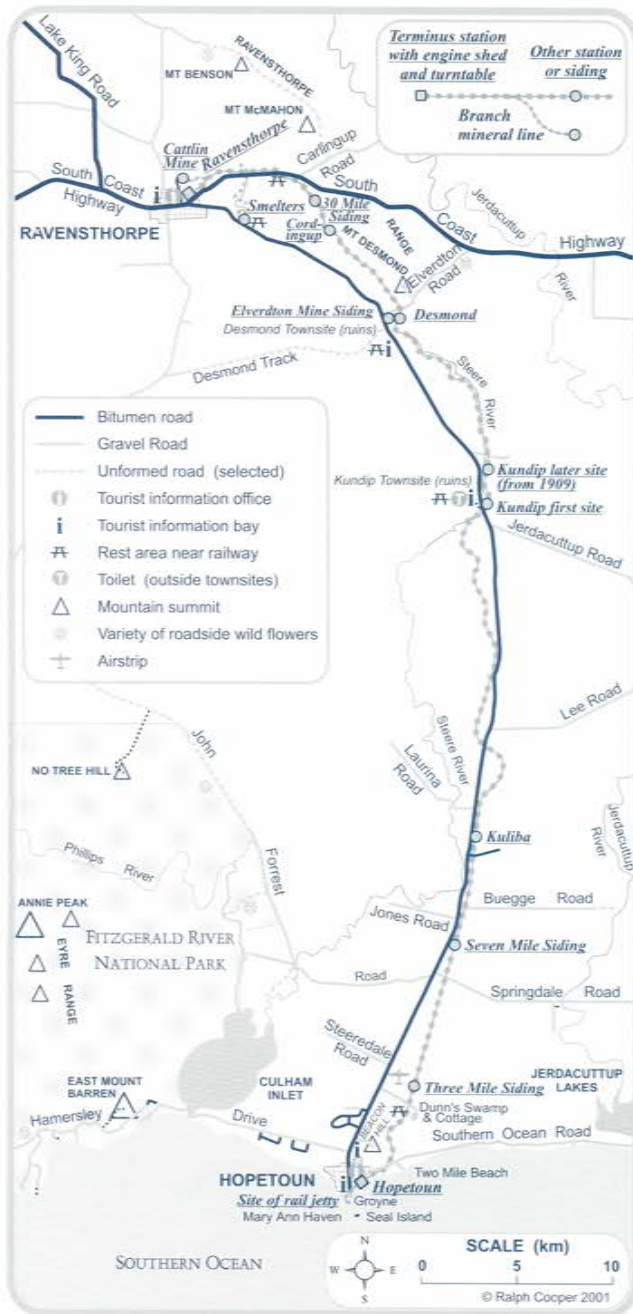


# HOPETOUN RAVENSTHORPE RAILWAY HERITAGE WALK TRAIL

(54 kms when complete)



## CODE OF CONDUCT

BE RESPONSIBLE FOR YOURSELF AND THE ENVIRONMENT

THE RAILWAY HERITAGE TRAIL IS  
DESIGNATED AS A SINGLE USE TRAIL FOR WALKERS ONLY

WEAR SUITABLE CLOTHING AND FOOTWEAR

CARRY WATER WITH YOU

IT IS ADVISABLE TO INFORM SOMEONE OF YOUR  
WHEREABOUTS BEFORE COMMENCING THE TRAIL

BE AWARE OF BEES AND SNAKES AND KEEP AWAY  
FROM THEM

PLEASE DON'T LIGHT FIRES

MAKE SURE ALL CIGARETTES ARE EXTINGUISHED  
PROPERLY

CARRY ALL RUBBISH AWAY, BUT NO ARTIFACTS OR  
WILDFLOWERS

IN FACT TAKE NOTHING AWAY BUT YOUR MEMORIES,  
LEAVE NOTHING BEHIND BUT YOUR FOOTPRINTS

ENJOY YOUR WALK



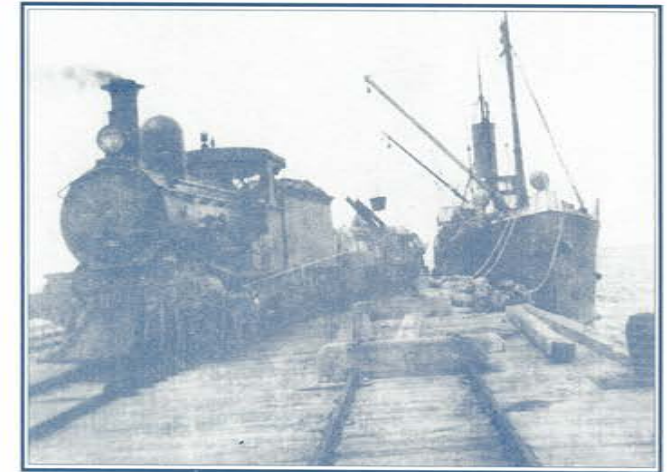
USERS WALK THIS TRAIL AT THEIR OWN RISK  
PLEASE KEEP TO THE DEFINED TRAIL

Ravensthorpe Hopetoun Tourist Bureau,  
PO Box 222, Ravensthorpe, WA 6346.  
Phone/Fax (08) 9838 1277

Welcome to

# Hopetoun Ravensthorpe Railway Heritage Walk Trail

HOPETOUN TRAILHEAD LOOP  
14 KMS ABOUT 3 TO 4 HOURS



## SPONSORS

Ravensthorpe Hopetoun Area Promotions,  
Shire of Ravensthorpe, Hopetoun Progress Assn, Hopetoun  
CWA, Main Roads, Lotteries Commission of WA.



Hopetoun Progress Association





## DIRECTIONS

The Hopetoun Trailhead Loop of 14 kms can be walked in sections as there are several entry and exit points as shown on the map.

Directional signs to assist you along the route, made from railway sleepers with a train sign, are at turn-offs and intersections.

There are nine plaques en route depicting places of historical interest, also marked on the map. There are wildflowers in bloom all year round on the way but springtime is the best.

Commencing the walk from the site where the Hopetoun jetty joined the mainland, just west of the present groyne, there is a large information sign. From here proceed east across the road and through McCulloch Park, pass in front of the new replica railway station/bandstand and CWA Rooms and along the side of the Esplanade a very short distance until you see the train marker pointing into the bushes. Follow the limestone path along the old railway line.

About 1 km from the commencement you come to the site of the railway station and marshalling yards where there are plaques with information. The present Southern Ocean Road is constructed on top of the railway for about 800 metres so an alternative route has been taken. Continue east from the turntable wending through the bush, turn left, cross the Southern Ocean Road, follow a track east along the firebreak, depicted with markers, then again through the bush for about 400 metres and you reach the railway running north.

Continue along the old railway line to the Dunn's Swamp Rest Area at 5.3 kms. Just about 300 metres north is Dunn's Swamp Road which will take you either right to the swamp or left to the sealed Ravensthorpe Hopetoun road. As far as the railway walk is concerned this is the end of this section at 5.3 kms.

To continue to walk the loop, return to the junction with a sign pointing to the beacons and bear right up the slope to the shipping beacons. Here you will have a 360° view. Proceed down the south side of the hill towards Hopetoun, across two firebreaks to the corner of Culham and Chambers Streets and continue down Chambers Street back onto the Esplanade and return to the old jetty site.

Time taken to walk all or parts of the loop will depend on walking speed, how much you stop

along the way to enjoy the wilderness experience of natural bushland, flora, fauna and historic sites or to picnic.

This is the second section of the 54km abandoned railway being developed into a heritage walk. The first stage, Desmond to Kundip, a distance of 9 kms, is through part of the Ravensthorpe Range.

Should you wish to read more of the flora and history of the area, there is a good selection of books for sale and free leaflets at the Ravensthorpe Tourist Bureau.

The annual Ravensthorpe Wildflower Show is held for the first two weeks of September with usually over 800 labelled local species on display.

### MARY ANN HAVEN/HOPETOUN

Hopetoun was named after the first Governor General of Australia, the Earl of Hopetoun, in 1901, the year of Federation and when Hopetoun was gazetted.

Previously it was known as Mary Ann Haven, named by whaler Mr Thomas of Albany after his eldest daughter.

The Dunn brothers were the first permanent pastoralists around Hopetoun and Ravensthorpe commencing their settlement in 1868 at Cocanarup. They shepherded their sheep on the good pastures of river flats and close to permanent fresh water. So in the 1870s and for the next three decades they washed and shored their sheep at Dunn's Swamp, transported the wool bales by wagon to the beach, loaded them onto lighters to waiting sailing ships ultimately to be exported to London.

While at Jerdacuttup Spring in 1870 they met up with John Forrest (later Sir) who was surveying the East West Telegraph Line which was completed and came into operation in 1877.

With the discovery of gold and copper and the development which followed, Mary Ann Haven lost its peaceful existence and became a busy port with a 432 metre long jetty and a railway completed to Ravensthorpe in 1909. Then it was the train that took on water from Dunn's Swamp at the Three Mile Siding.

Water was also pumped from Jerdacuttup Spring to an overhead tank at the Seven Mile Siding, also known as the Jerdacuttup Siding, made especially in 1911 for the train to transport water to Ravensthorpe and the mines during dry years.

